



Interior Space Heating Z Mesh Element



Z Mesh layout on concrete



Z Mesh under tile/stone



Z Mesh layout on



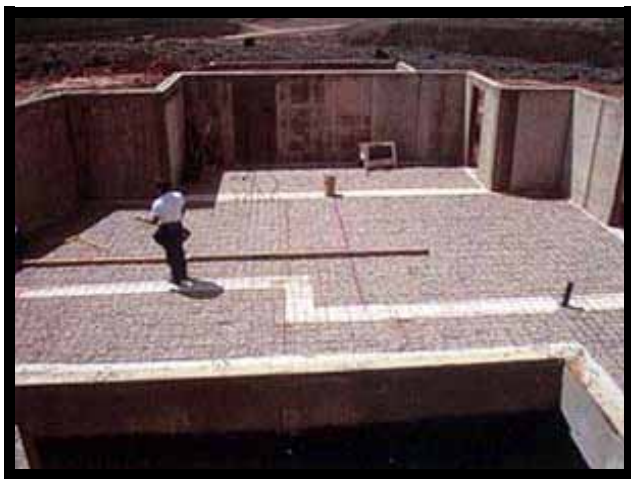
Z Mesh under hardwood flooring



Interior Space Heating Tuff Cable Element



Tuff Cable in Interior Concrete—in high school



Heatizon Tuff Cable in New
Pour Concrete Basement



Tuff Cable on a Wood Sub-Floor
in Mortar Bed



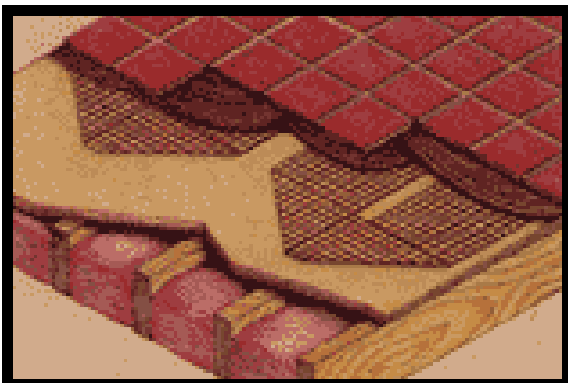
Floor Warming



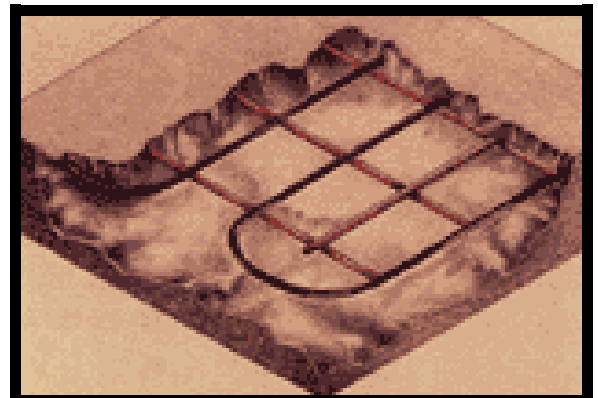
Floor Warming Provides Family Comfort



Heatizon Turns Marble From Cold to Warm to the Touch



Z Mesh or
Tuff Cable
Element
Installs Easily
Under Most
Floor
Coverings





Snow Melting Tuff Cable Element



Tuff Cable in New Pour Concrete
Trax Lite Rail Handicap Ramp—Salt Lake City, Utah



Tuff Cable Under Pavers
LDS Conference Center — Salt Lake City, Utah



Snow Melting Tuff Cable Element



Tuff Cable in Concrete



Tuff Cable Ready for Concrete



Tuff Cable in Concrete Driveway
(If only cars could have Heatizon
Systems snowmelt!)



Snow Melting Tuff Cable Element



Stairs and Walkways with Tuff Cable



Tuff Cable in Concrete



Tuff Cable Under Pavers



Snow Melting Tuff Cable Element Retrofit



Tuff Cable Retrofit Tire Tracks



Asphalt
Retrofit



Concrete
Retrofit



Tuff Cable Retrofit Snowmelt Projects In Various Stages



Roof De-Icing



Roof De-icing—Tuff Cable in a Heatsink Kit
Under Metal Roofing Material



Roof De-icing in Valleys



No Heatizon!



Roof De-Icing



Roof De-icing—
Z Mesh Under Non Conductive
Roofing Material





Control Boxes



CBX6/CBX23
Control Box



Floorizwarm
System



SLC500
Control Unit



Control units mount easily on any wall and consume no floor space