

**WARNING!!**  
 DO NOT CUT OR DAMAGE  
 HEATIZON "TUFF CABLE" OR  
 ITS INSULATOR IN ANY WAY

DRAWING NO.:

**FH-6**

**TUFF CABLE UNDER TILE/STONE  
 ON CONCRETE SLAB**

DRAWING NO.:

JNL

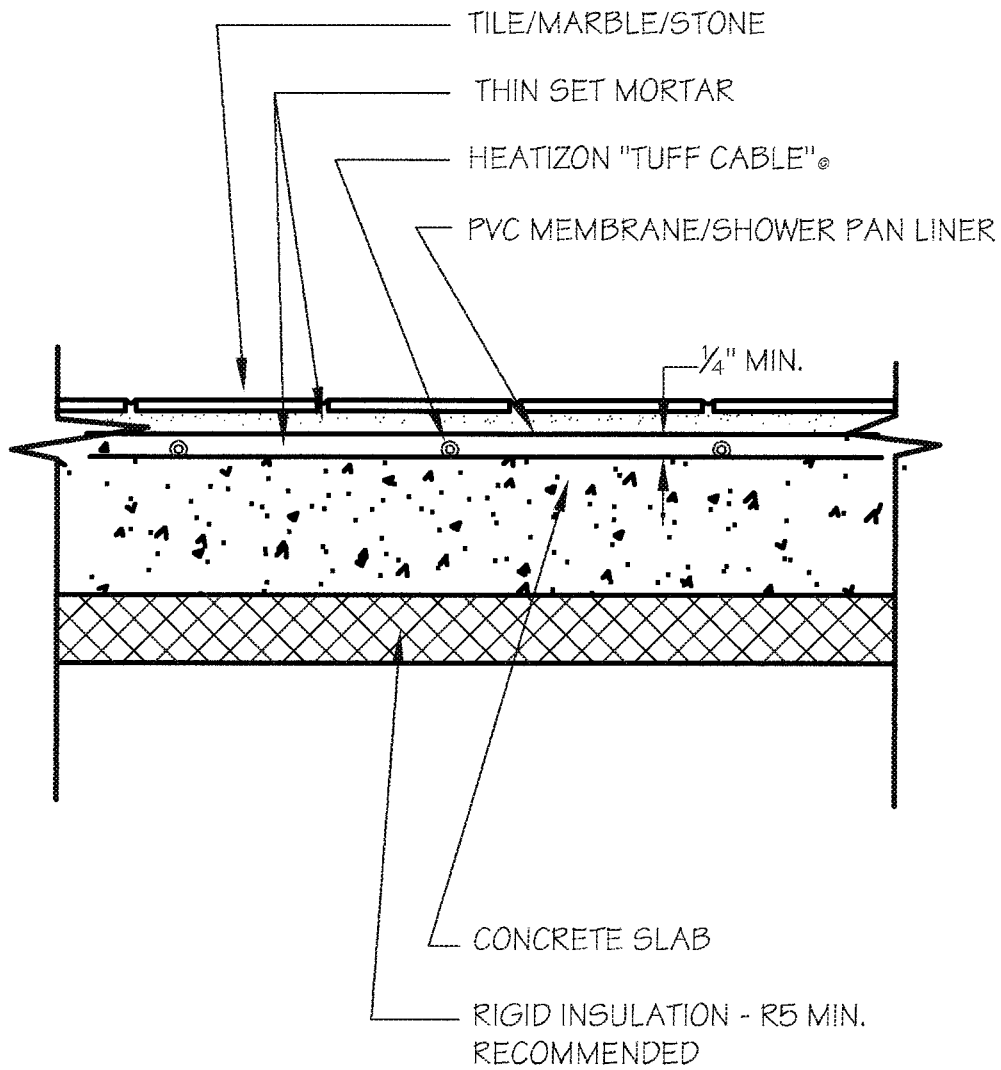
DATE:

JAN. 2003

**HEATIZON SYSTEMS**

*advanced floor heating/ snow and ice removal systems*

4403 SOUTH 500 WEST, MURRAY, UTAH 84123 PH (801) 293-1232 FAX (801) 293-3077



**WARNING!!**  
 DO NOT CUT OR DAMAGE  
 HEATIZON "TUFF CABLE" OR  
 ITS INSULATOR IN ANY WAY

DRAWING NO.:

**FH-7**

**TUFF CABLE IN SHOWER  
 PAN ON CONCRETE SLAB**

DRAWING NO.:

JNL

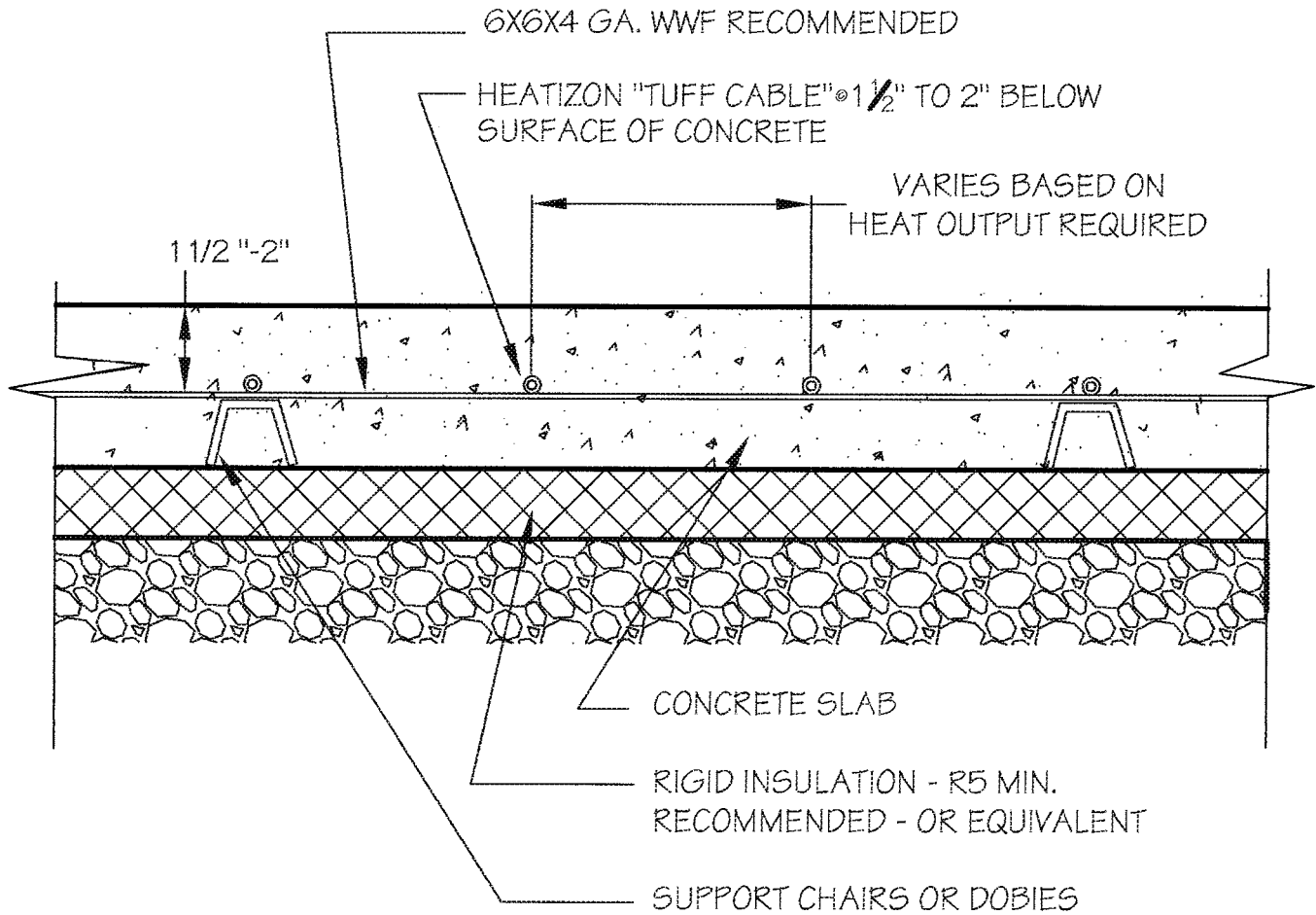
DATE:

JAN. 2003

**HEATIZON SYSTEMS**

*advanced floor heating/ snow and ice removal systems*

4403 SOUTH 500 WEST, MURRAY, UTAH 84123 PH (801) 293-1232 FAX (801) 293-3077



**WARNING!!**  
 DO NOT CUT OR DAMAGE  
 HEATIZON "TUFF CABLE" OR  
 ITS INSULATOR IN ANY WAY

DRAWING NO.:

**FH-9**

**TUFF CABLE IN CONCRETE**

DRAWING NO.:

JNL

DATE:

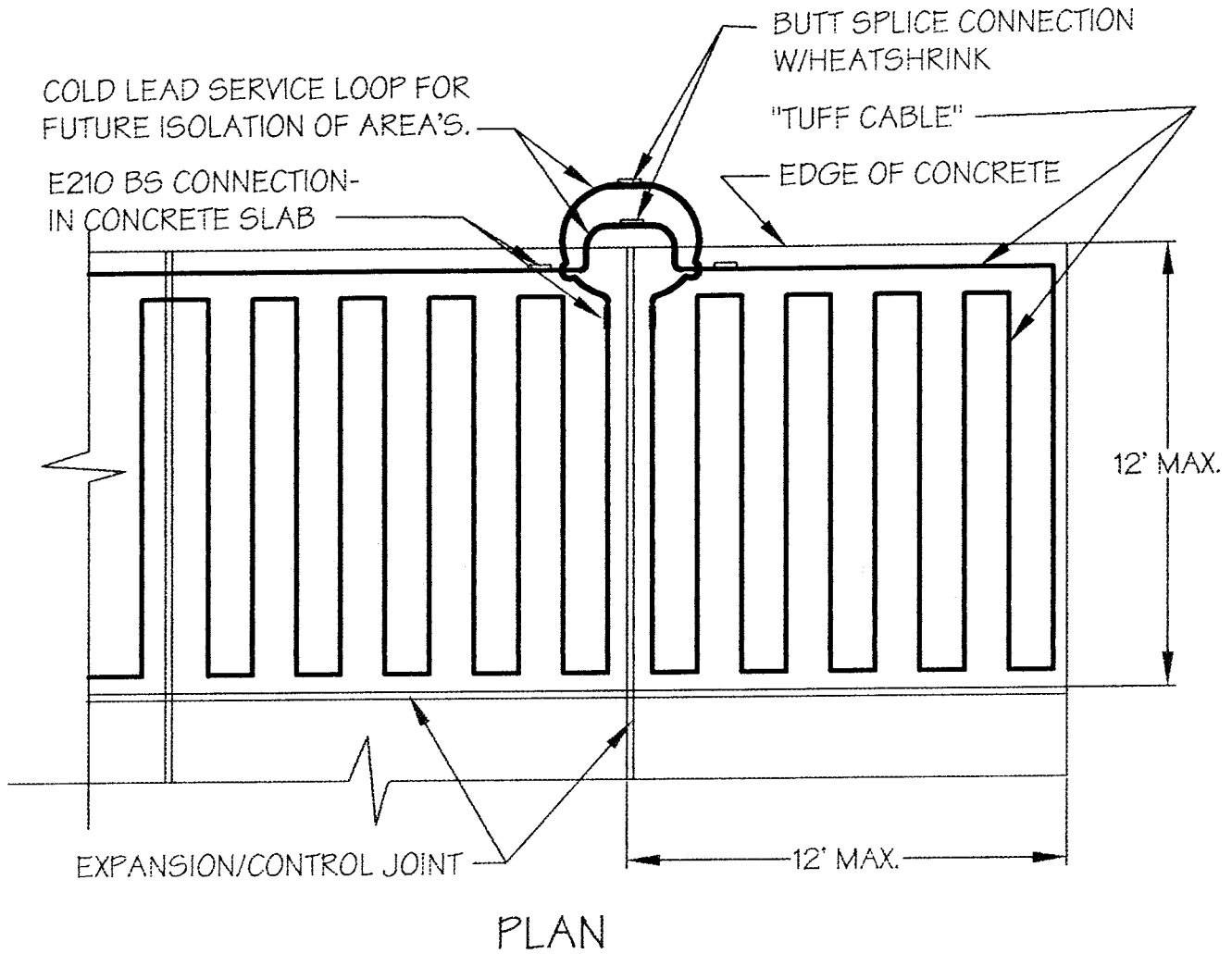
JAN. 2003

**HEATIZON SYSTEMS**

*advanced floor heating/ snow and ice removal systems*

4403 SOUTH 500 WEST, MURRAY, UTAH 84123 PH (801) 293-1232 FAX (801) 293-3077

**WARNING!!**  
 DO NOT CUT OR DAMAGE  
 HEATIZON "TUFF CABLE" OR  
 ITS INSULATOR IN ANY WAY



**NOTE:**  
 "TUFF CABLE" SHALL NOT EXTEND  
 THROUGH EXPANSION OR CONTROL  
 JOINTS. "JUMPER" TO BE USED AT  
 ALL JOINTS.

DRAWING NO.:

**FH-9J**

**TUFF CABLE IN CONCRETE  
 & SERVICE LOOP**

DRAWING NO.:

JNL

DATE:

JAN. 2003

**HEATIZON SYSTEMS**

*advanced floor heating/ snowand ice removal systems*

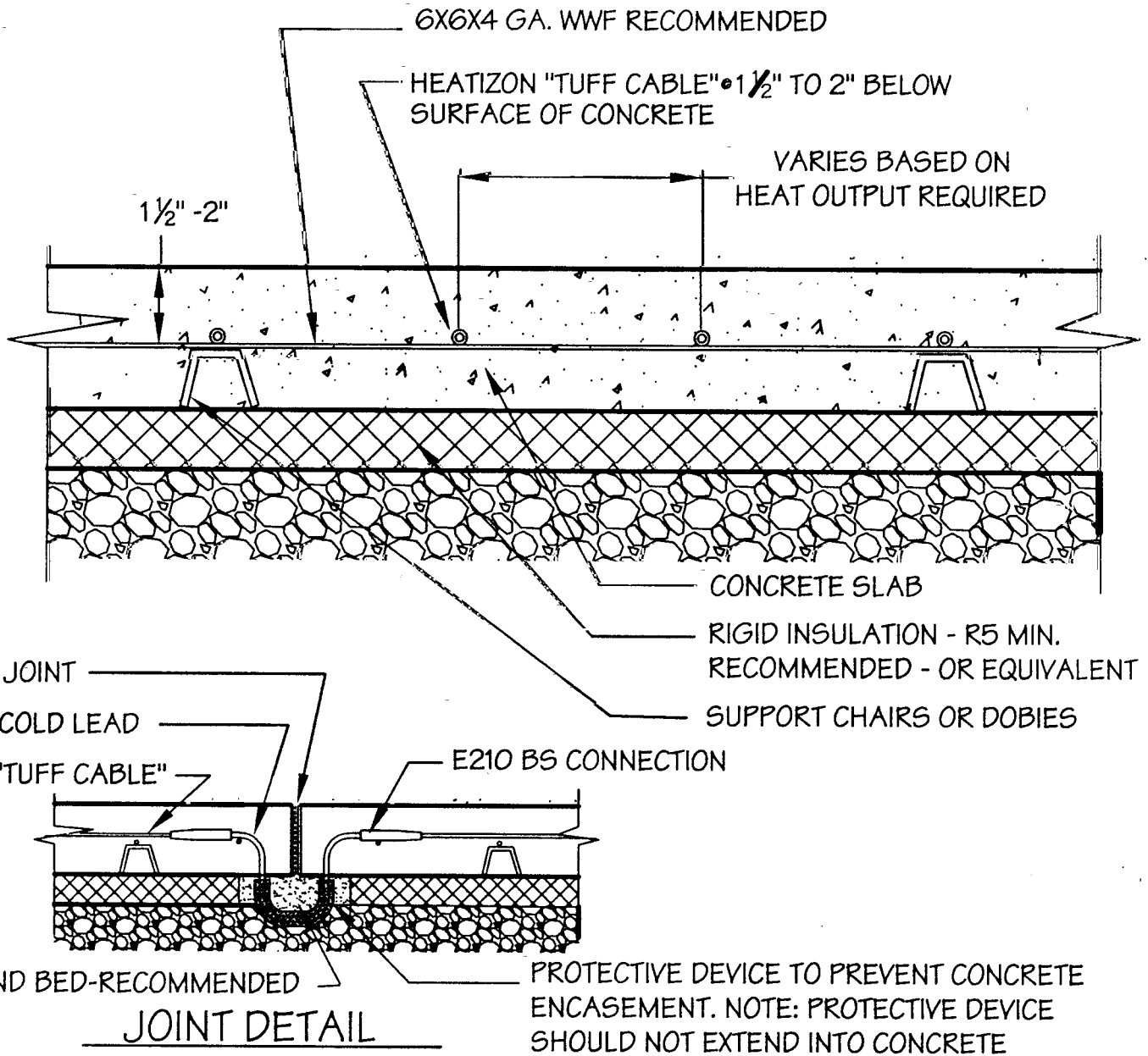
4403 SOUTH 500 WEST, MURRAY, UTAH 84123 PH (801) 293-1232 FAX (801) 293-3077

**WARNING!!**

DO NOT CUT OR DAMAGE  
HEATIZON "TUFF CABLE" OR  
ITS INSULATOR IN ANY WAY

**NOTE:**

"TUFF CABLE" SHALL NOT EXTEND  
THROUGH EXPANSION, CONTROL OR  
ANY OTHER JOINTS. "JUMPER" TO  
BE USED AT ALL JOINTS.



DRAWING NO.:

FH-9M

**TUFF CABLE IN CONCRETE  
& JOINT DETAIL**

DRAWN BY:

JNL

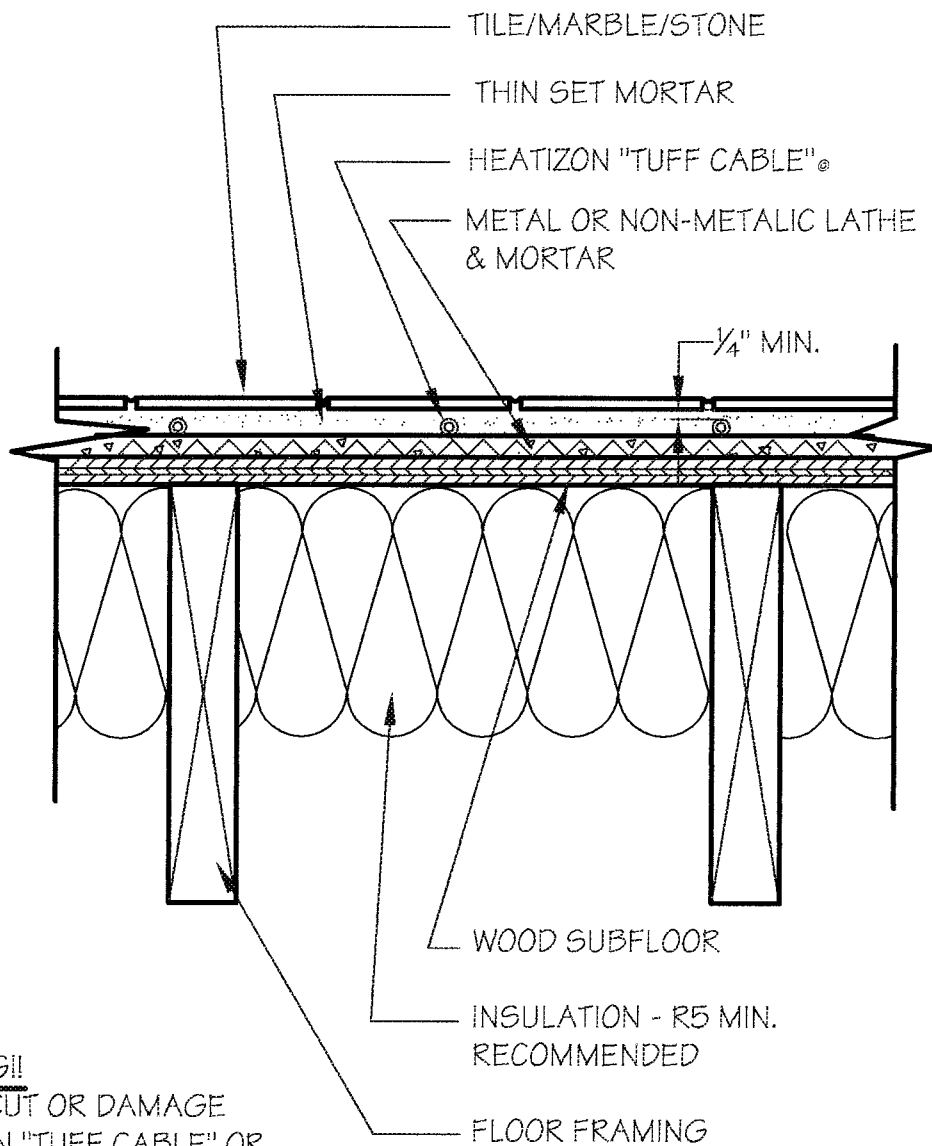
DATE:

MAR. 2004

**HEATIZON SYSTEMS**

*advanced floor heating/ snowand ice removal systems*

4403 SOUTH 500 WEST, MURRAY, UTAH 84123 PH (801) 293-1232 FAX (801) 293-3077

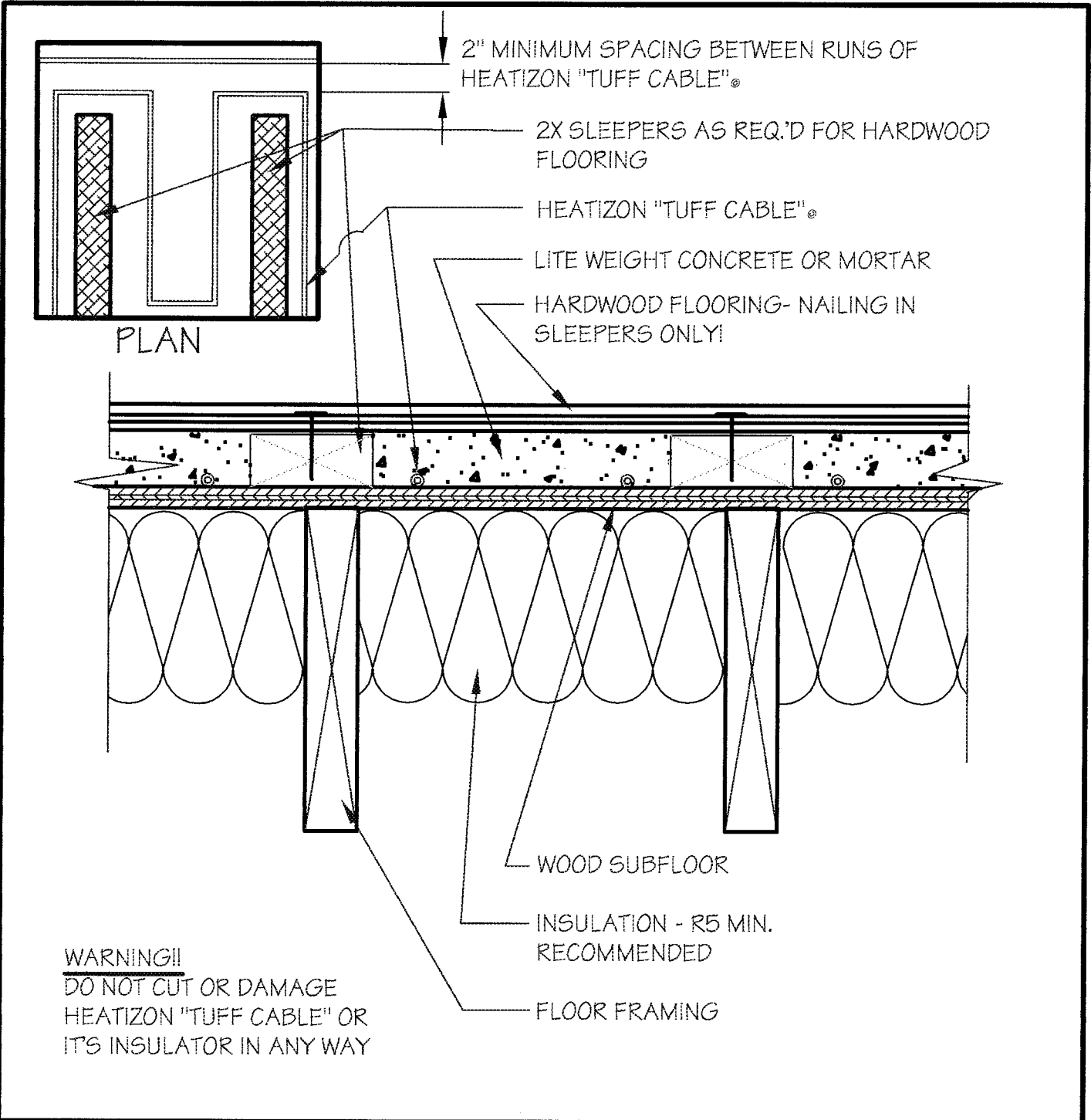


**WARNING!!**  
 DO NOT CUT OR DAMAGE  
 HEATIZON "TUFF CABLE" OR  
 ITS INSULATOR IN ANY WAY.  
 PROVIDE MUD SEPARTION  
 BETWEEN METAL LATHE & TUFF  
 CABLE.

DRAWING NO.: <b>FH-10</b>	<b>TUFF CABLE UNDER TILE STONE w/LATHE ON WOOD SUBFLOOR</b>	DRAWING NO.: JNL DATE: JAN. 2003
------------------------------	---	---

**HEATIZON SYSTEMS**  
*advanced floor heating/ snowand ice removal systems*

4403 SOUTH 500 WEST, MURRAY, UTAH 84123 PH (801) 293-1232 FAX (801) 293-3077

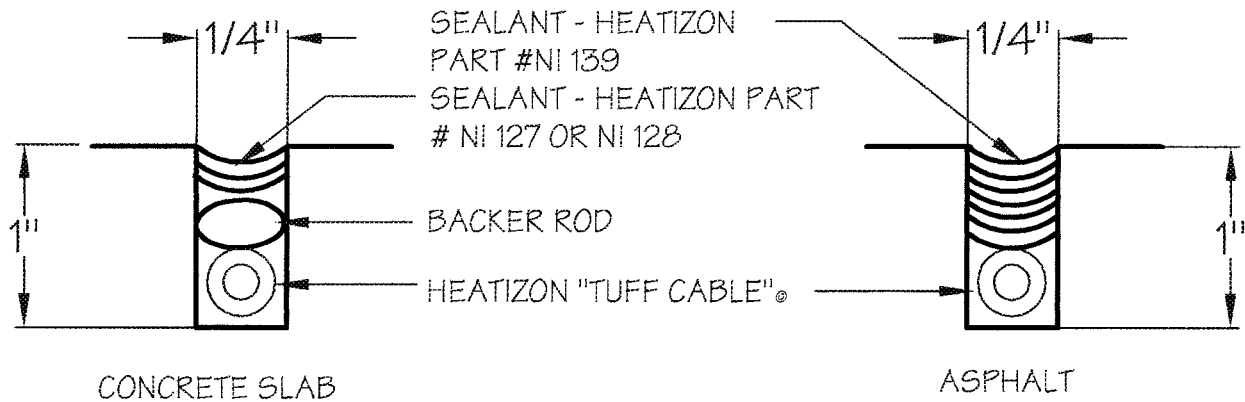
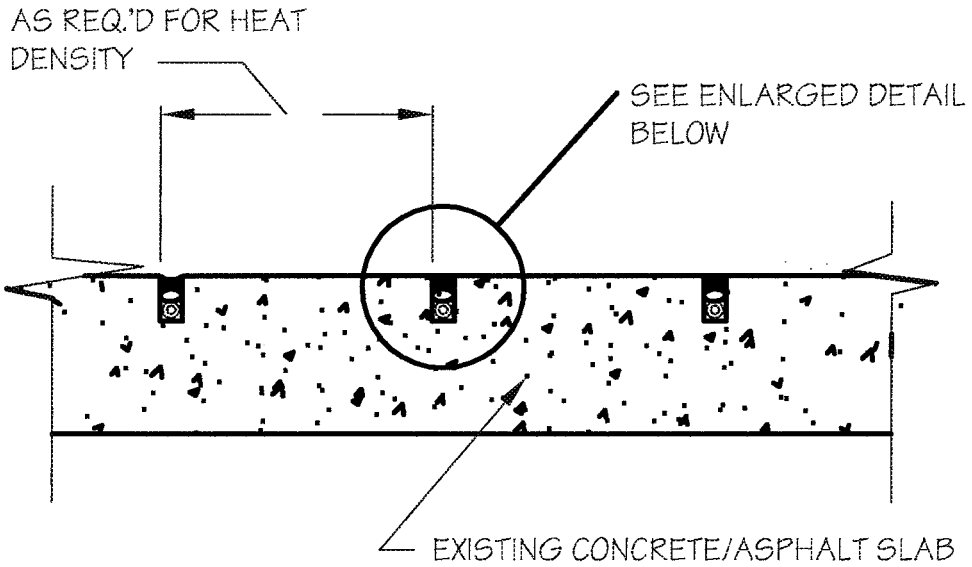


DRAWING NO.: <b>FH-11</b>	<b>TUFF CABLE UNDER HARDWOOD IN LITE WEIGHT CONCRETE ON WOOD SUBFLOOR</b>	DRAWING NO.: JNL DATE: JAN. 2003
------------------------------	---	---

**HEATIZON SYSTEMS**  
*advanced floor heating/ snowand ice removal systems*

4403 SOUTH 500 WEST, MURRAY, UTAH 84123 PH (801) 293-1232 FAX (801) 293-3077

**WARNING!!**  
 DO NOT CUT OR DAMAGE  
 HEATIZON "TUFF CABLE" OR  
 ITS INSULATOR IN ANY WAY



DRAWING NO.: <b>FH-13</b>	<b>TUFF CABLE RETROFIT IN CONCRETE OR ASPHALT</b>	DRAWING NO.: JNL
		DATE: FEB. 2003

**HEATIZON SYSTEMS**  
*advanced floor heating/ snow and ice removal systems*

4403 SOUTH 500 WEST, MURRAY, UTAH 84123 PH (801) 293-1232 FAX (801) 293-3077