



## Interior Space Heating Z Mesh Element



Z Mesh layout on concrete



Z Mesh under tile/stone



Z Mesh layout on



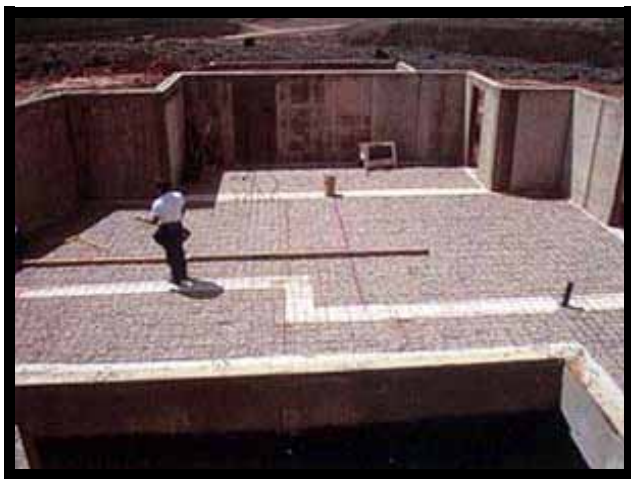
Z Mesh under hardwood flooring



## Interior Space Heating Tuff Cable Element



Tuff Cable in Interior Concrete—in high school



Heatizon Tuff Cable in New  
Pour Concrete Basement



Tuff Cable on a Wood Sub-Floor  
in Mortar Bed



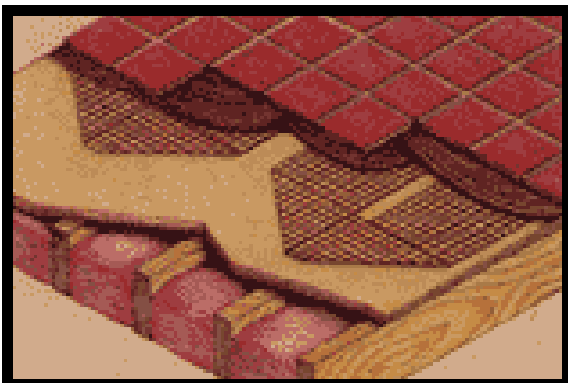
## Floor Warming



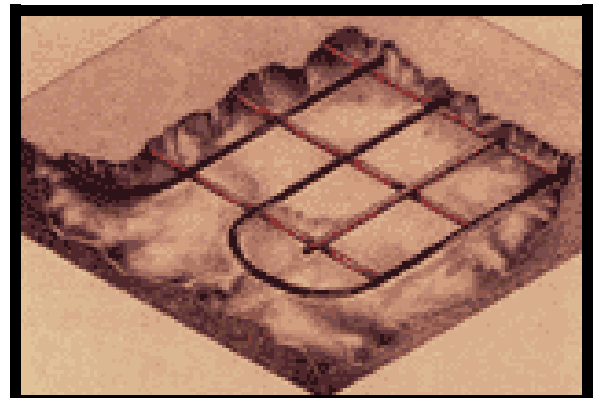
Floor Warming Provides Family Comfort



Heatizon Turns Marble From Cold to Warm to the Touch



Z Mesh or  
Tuff Cable  
Element  
Installs Easily  
Under Most  
Floor  
Coverings





## Snow Melting Tuff Cable Element



Tuff Cable in New Pour Concrete  
Trax Lite Rail Handicap Ramp—Salt Lake City, Utah



Tuff Cable Under Pavers  
LDS Conference Center — Salt Lake City, Utah



## Snow Melting Tuff Cable Element



Tuff Cable in Concrete



Tuff Cable Ready for Concrete



Tuff Cable in Concrete Driveway  
(If only cars could have Heatizon  
Systems snowmelt!)



## Snow Melting Tuff Cable Element



Stairs and Walkways with Tuff Cable



Tuff Cable in Concrete



Tuff Cable Under Pavers



# Snow Melting Tuff Cable Element Retrofit



Tuff Cable Retrofit Tire Tracks



Asphalt  
Retrofit



Concrete  
Retrofit



Tuff Cable Retrofit Snowmelt Projects In Various Stages



## Roof De-Icing



Roof De-icing—Tuff Cable in a Heatsink Kit  
Under Metal Roofing Material



Roof De-icing in Valleys



No Heatizon!



# Roof De-Icing



Roof De-icing—  
Z Mesh Under Non Conductive  
Roofing Material





## Control Boxes



CBX6/CBX23  
Control Box



Floorizwarm  
System



SLC500  
Control Unit



Control units mount easily on any wall and consume no floor space